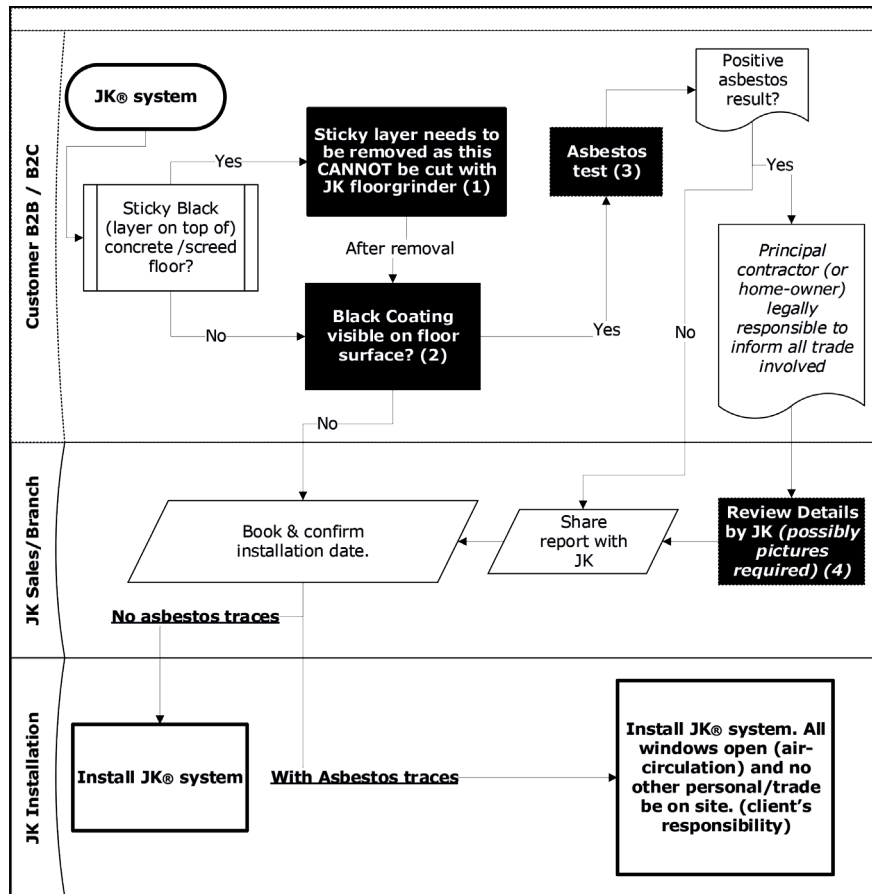


Flowchart; floor-surface examination for JK ® system.



1. Floor surface must be solid and no soft and/or sticky (bitumen) containing substance can be present on top of the solid subfloor. Any soft or sticky substance will interfere with the operation of the floorgrinding equipment and causes damage to the machinery. Various products (liquid dissolvents), rental-equipment (i.e., floor-scabbler) or professional trade available to carry out sub-floor preparations. Lacking these preparations will result in delay and causes significant issues for the underfloor heating system installation and application of the final-floor finish. Bonding of both; smoothing compounds and adhesives will be problematic. ([See document ; Floor surface Illustrations](#))

2. All floor-surfaces must be grey (cement/concrete colour). If the floor surface appears to be black, e.g., a black coating, black remaining of bitumen, tar adhesive, or any other black substance proceed with an asbestos test.

3. Asbestos tests are done quickly and for available rates. The procedures depend per testing-laboratory. Generally, this contains of digging up a small section of the floor (i.e., 5cm * 5cm), wrap it in packing material and ship by envelop to the testing laboratory. Results presented within days with formal certificate (shared by email). Cost of testing ranges between 20GBP – 60GBP (depending on location and type of service). Details of one specific laboratory; <https://passukltd.co.uk/product/asbestos-sample-testing-kits/>

4. All projects tested positive for asbestos traces are subject to individual assessment. Legal responsibility by main-contractor or home-owner. Asbestos removal (by licenced third-party) is recommended in all cases. JK staff-members have completed a UKATA Asbestos Awareness Course and are not qualified to remove asbestos contaminated materials.

This form is online available; <https://www.jk-gb.com/downloads.php>

Floor Surface Illustrations [black, sticky, bitumen, tar, adhesive]

These illustrations are presented to support floor-surface examination and can be used to identify the various scenarios.

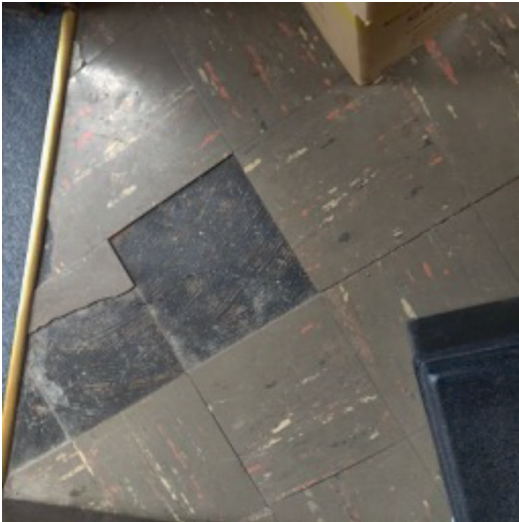


Figure 1. Bitumen adhesive under vinyl tile



Figure 2.1. Sticky bitumen under ceramic tile



Figure 3. Black non-sticky floor after removal of old floor-finish



Figure 2.2. Sticky bitumen present

Floor Surface Illustrations [black, sticky, bitumen, tar, adhesive]

These illustrations are presented to support floor-surface examination and can be used to identify the various scenarios.



Figure 4. Black (sticky) floor after removal old floor-finish



Figure 5. Floor-scabbler equipment designed for the purpose to prepare floor-surfaces. Removal of various remains, e.g.; adhesive, tar and bitumen.



Figure 8. Negative asbestos result and non-sticky black surface can be cut with the JK floorgrinder to install the JK® system.



Figure 6. Result of floor partly prepared with floor-scabbler



Figure 7. Fully prepared floor-surface with JK® system installed. (Concrete/Screed/Cementitious floor-surface; gray shaded)